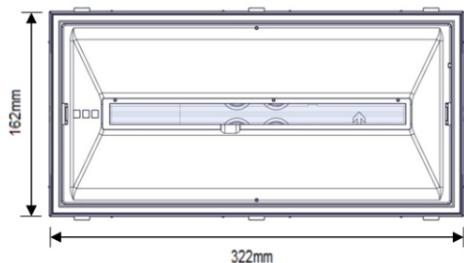
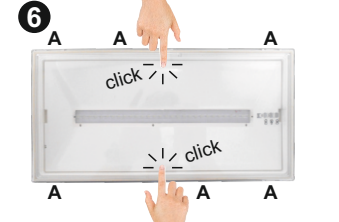
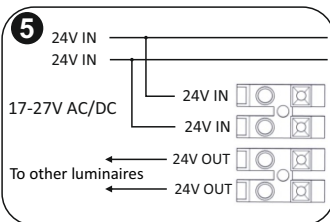
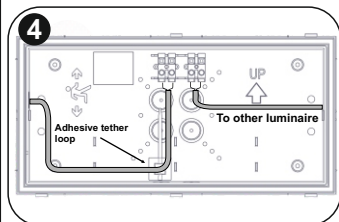
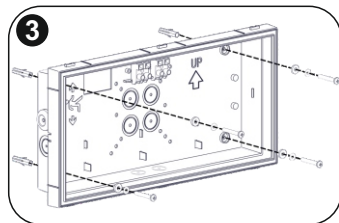
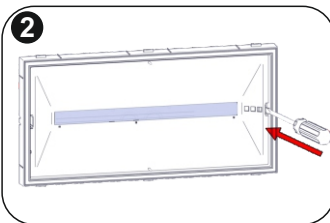
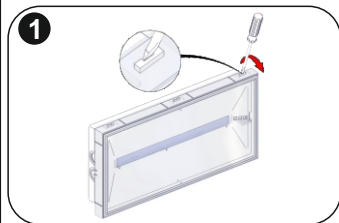


Surface Mounted

Dimensional Drawings:

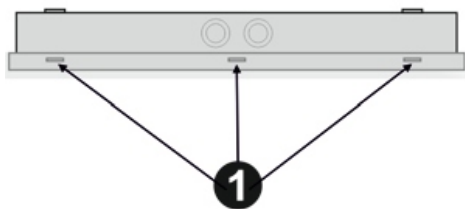


Installation:



- Step 1:** Place a flat blade screwdriver and pull up gently the diffuser's clips from both sides to remove the diffuser.
- Step 2:** Place a flat blade screwdriver and pull up gently the reflector.
- Step 3:** Install the plastic base with the included mounting screws and plugs. If the hole that exists is not useful, drill another hole on one of the designated positions in order to pass the cables and install the included gasket (verify that are not deformed).
- Step 4:** Install the included rubber gasket (verify that is not deformed). Make a hole in the center of the rubber gasket by using a small screwdriver. Pass the round cable through the rubber gasket. Install the included tie-wrap to the included adhesive tether loop and fasten securely the power cable in order to anchor it. Install the power cable as shown in the picture. Always use in any case round mains cable, with a diameter of 5-10mm (H05RN-F type $2 \times 1 \text{mm}^2$) or any other type, at least equal to it's mechanical and electrical properties). ATTENTION!! The cable must not be deformed in any way (This requirement is important to ensure the IP rating).
- Step 5:** Connect the 24V cable to the respective terminal block: C1 and C2. Power supply cables cross section should be $0.8 - 3 \text{mm}^2$. Open a second hole on the plastic base, install the rubber gasket and pass another one 24V cable. Connect the second 24V cable to the respective terminal block: C1 and C2 and connect it to the next luminaire.
- Step 6:** Refit carefully the removed plastic parts. Finally place the diffuser. Attention!! The plastic latches (A) must be secured (click sound). This requirement is important to ensure the IP65 rating. Power on the luminaire.

Pictogram Installation



Step 1: Place a flat blade screwdriver and pull up gently the diffuser's clips from both sides to remove the diffuser.

Step 2: Install the pictogram you need in the diffuser and refit it to the luminaire. (In case you need to change the pictogram follow the same procedure.)

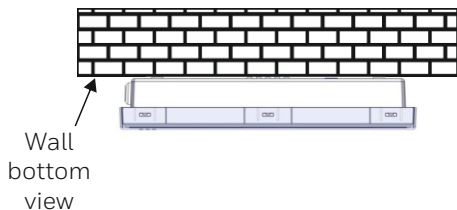
Step 3: Fill in the letter G on the specification label. X 1 | A E | 60

G



Mounting Methods

Wall installation



Wall
bottom
view

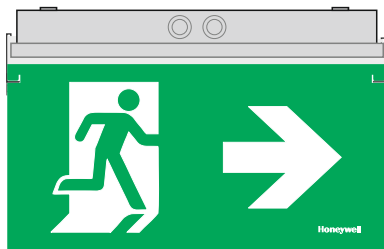
Ceiling installation



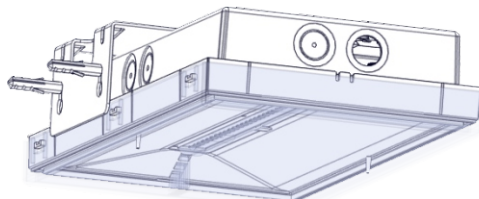
Ceiling

ImperLED luminaires can be surface mounted on walls or ceilings.

Mounting Accessories (Available After Request)



290405.11 ImperLED Suspended Pictogram



290471 ImperLED Wall Bracket

Technical description	ImperLED CBS 24V
Part no.:	290148
Operation Voltage:	17-27V AC/DC,50-60Hz
Maximum Power Consumption:	2.3W / 2.6VA
Lumen output	350lm
Produced in accordance with:	EN 60598-1, EN 60598-2-22, EN 55015 EN 61547, EN 61000-3-2, EN 61000-3-3
Ambient Temperature Range:	-30 to 50 °C
Relative Humidity:	Up to 95%
Degree of cover protection:	IP65
Technical lifetime (light source):	> 100000 hours
Weight:	720 gr

Note: If the supply cable of the luminaire is damaged, it shall exclusively be replaced by a competent person in order to avoid hazard.

 The light source of this luminaire is not user replaceable. When the light source reaches its end of life the whole luminaire shall be replaced.



At the end of their useful life the packaging & product should be disposed of via a suitable recycling centre. Do not dispose of with your normal household waste. Do not burn.

