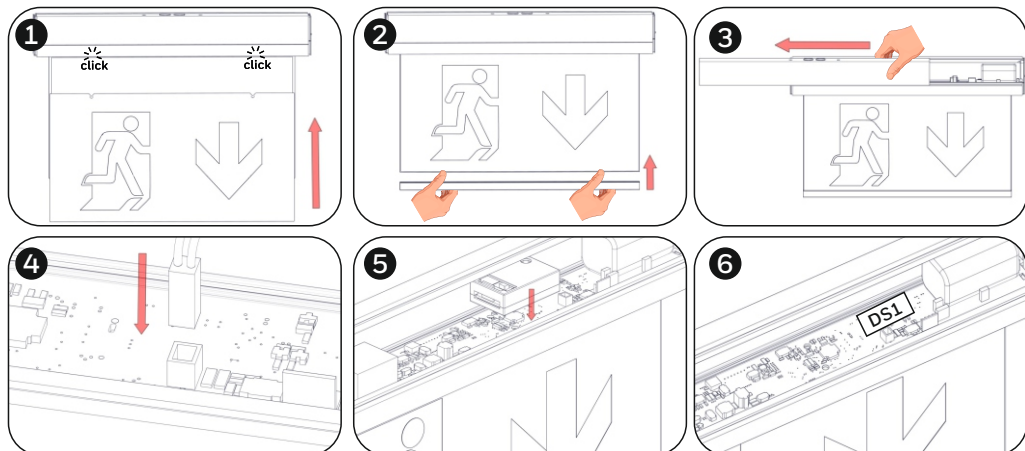


Installation:



Step 1: For double sided pictogram, install the appropriate pictograms to both sides, push up until you hear click sound. For single sided pictogram, there is one blind pictogram in the package.

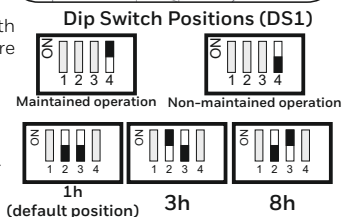
Step 2: Install the retaining clip to hold the pictograms.

Step 3: Dismantle the luminaire by sliding the mounting part as shown in picture. Fasten the mounting part (with screws from within) to wall (with or without supplied spacers) or ceiling (with or without supplied spacers). See the next page for mounting methods.

Step 4: Connect the battery cable to its respective connector on the PCB.

Step 5: In case you use a module connect it on the PCB.

Step 6: The control of maintained or non maintained operation of the luminaire is achieved through Switch 4 of DS1. For maintained operation, switch number 4 must be in ON position. For non-maintained operation, switch number 4 must be in OFF position.



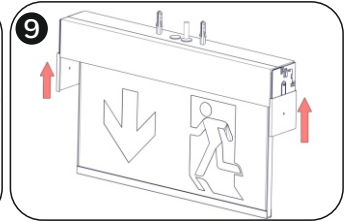
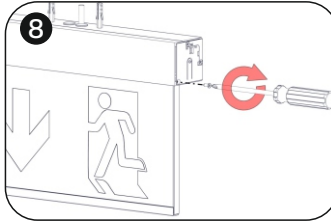
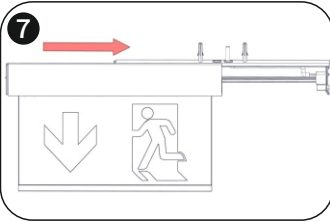
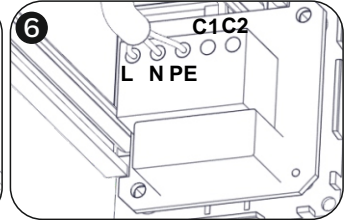
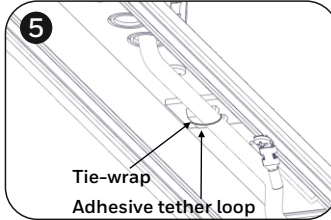
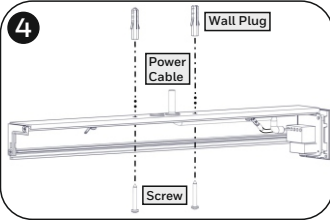
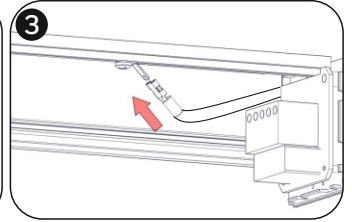
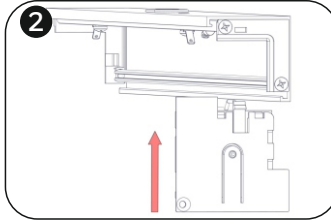
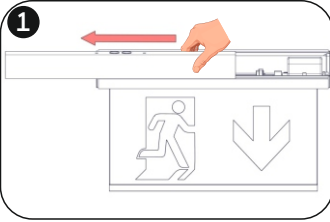
The user can select one of the 3 available minimum autonomy durations: 1 hour, 3 hours and 8 hours. The selection must be done while the luminaire is disconnected from AC and battery supplies. The selection is achieved through Switches 2 & 3 of DS1. Switch 1 is not used.

Two additional labels are included in the package, one for 3 hours duration (180) and one for 8 hour duration (480). Depending on the selected duration, the installer must cover the default 1 hour (60) printing with one that has the required duration.

Please take notice of the orientation of the label.

Mounting Methods

Ceiling Mounting



To mount the luminaire to the ceiling, with or without supplied spacers, the mounting holes must face towards to the ceiling.

Step 1: Dismantle the luminaire by sliding the mounting part as shown in picture.

Step 2: Slide the plastic part with the terminals to the mounting part, until you hear click sound.

Step 3: Install the ground wire as shown in picture.

Step 4: Fasten the mounting part with the supplied mounting accessories. Drill a hole on a black grommet and pass the mains cables through it.

Step 5: Install the included tie-wrap to the included adhesive tether loop and fasten securely the power cable in order to anchor it.

Step 6: Connect the mains cables to terminal blocks: L for live wire, N for neutral and PE for ground. Power supply cables cross section should be 0.8 - 3 mm². The C1 and C2 terminals are used for eBus communication (optional), DALI communication (optional), or voltage free contact (optional).

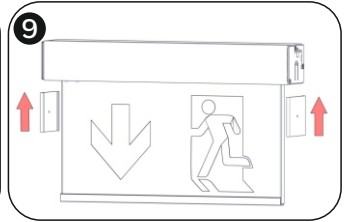
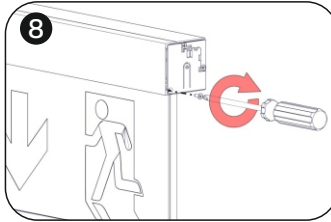
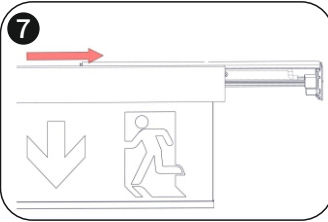
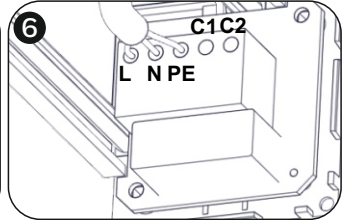
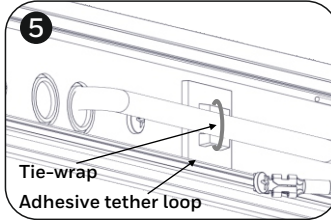
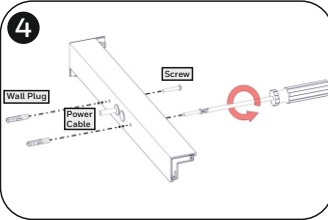
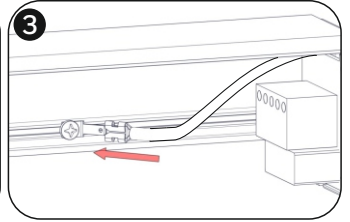
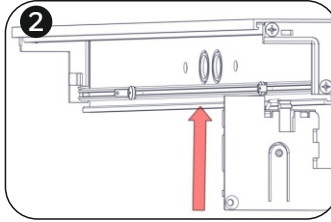
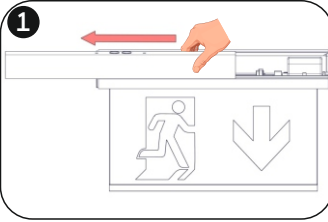
Step 7: Slide the main body of the luminaire back to the mounting part.

Step 8: Fasten the screw on the side of the luminaire.

Step 9: Slide the aluminium protective covers to both sides of the luminaire, until you hear click sound.

Mounting Methods

Wall Mounting



To mount the luminaire to the wall, with or without supplied spacers, the mounting holes must face towards to the wall.

Step 1: Dismantle the luminaire by sliding the mounting part as shown in picture.

Step 2: Slide the plastic part with the terminals to the mounting part, until you hear click sound.

Step 3: Install the ground wire as shown in picture.

Step 4: Fasten the mounting part with the supplied mounting accessories. Drill a hole on a black grommet and pass the mains cables through it.

Step 5: Install the included tie-wrap to the included adhesive tether loop and fasten securely the power cable in order to anchor it.

Step 6: Connect the mains cables to terminal blocks: L for live wire, N for neutral and PE for ground. Power supply cables cross section should be 0.8 - 3 mm². The C1 and C2 terminals are used for eIBus communication (optional), DALI communication (optional), or voltage free contact (optional).

Step 7: Slide the main body of the luminaire back to the mounting part.

Step 8: Fasten the screw on the side of the luminaire.

Step 9: Slide the aluminium protective covers to both sides of the luminaire, until you hear click sound.

Technical description	ExitLED PRO M ST LED 230V w/pict 10Y 138h
Part no.:	138011.10
Operation Voltage:	220-240V AC, 50-60 Hz
Maximum Power Consumption:	5.5W / 6VA
Irated (1h/3h/8h):	110 / 99 / 36 mA
Prated (1h/3h/8h):	1.2 / 1.1 / 0.4 W
Battery (LiFePO ₄):	2 x 6.4V / 0.6Ah
Battery Protection:	Overcharge protection / Deep discharge protection
Min./Max. Charge Current:	194 / 196 mA
Charge Voltage Range:	5.4 - 9V
Charging Time:	12 hours
Emergency Mode Duration:	1h / 3h / 8h manually selected (default 1h)
Lumen output, normal:	220lm
Lumen output, emergency (1h/3h/8h):	220/200/75lm
Produced in accordance with:	EN 60598-1, EN 60598-2-22, EN 55015 EN 61547, EN 61000-3-2, EN 61000-3-3
Ambient Temperature Range:	5 to 40 °C
Relative Humidity:	Up to 95%
Degree of cover protection:	IP40
Technical lifetime (light source):	> 100000 hours
Weight:	1000 gr
Expected Battery Lifetime:	10 years
Controlgear classification in accordance with IEC 62034: with automatic test function	

In case that the luminaire no longer meets its rated duration of operation, the battery must be replaced.

Battery Replacement:

Disconnect mains, carefully remove the luminaire from the ceiling or wall. Dismantle the luminaire. Disconnect the battery and install a new one of the same type and characteristics.


Note: In case of battery replacement, this must be replaced with parts of the same type and characteristics. The replacement must be performed by the manufacturer of a competent person.


Note: If the supply cable of the luminaire is damaged, it shall exclusively be replaced by a competent person in order to avoid hazard.

Note: In case of mains power disconnection for a period of more than two months, the battery must be disconnected.














Important notice when installing luminaires within the same area!!!

To avoid that luminaires perform their battery test at the same day, connect the battery packs with more than 1,5 minutes inbetween.

 The light source of this luminaire is not replaceable, when the light source reaches its end of life the whole luminaire shall be replaced.

 At the end of their useful life the packaging, product and batteries should be disposed of via a suitable recycling centre. Do not dispose of with your normal household waste. Do not burn.



Indicator LEDs	Description
<div style="display: flex; justify-content: space-between;"> <div style="text-align: center;"> <p>GREEN</p>  </div> <div style="text-align: center;"> <p>RED</p>  </div> </div>	Normal
	Charging (battery test not possible while charging)
	Mains off, battery not connected or charger fault
	Battery test (Duration: 1h,3h,8h)
	Battery fault
	Light source test (Duration: 3s)
	Light source fault
	Battery fault and light source fault
<p>LED Status explanation</p> <div style="display: flex; justify-content: space-around; align-items: center;"> <div style="text-align: center;">  Off </div> <div style="text-align: center;">  On </div> <div style="text-align: center;">  Slow Blink </div> <div style="text-align: center;">  Fast Blink </div> </div>	

The ExitLED PRO is a self-contained maintained/non-maintained luminaire with selftest function.

Selftest functions

Every 15 days the luminaire will perform an emergency operation test. This will turn on the light source for approximately 3 seconds. The green LED will flash during this test sequence.

Every 6 months the luminaire will perform a battery condition test. The test will last for the chosen capacity. The light source will be lit and the green LED will flash during this test sequence.

Note: When using DALI or Wireless communication, the frequencies and schedules for tests will instead be determined by the connected PC software.

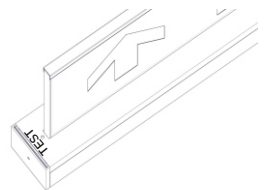
Manual test functions

Manual tests can only be performed if both mains and battery are connected.

By pressing the test button briefly (less than 5 seconds) an emergency operation test is performed. The light source will be lit for approximately 3 seconds, the green LED will flash during this test sequence.

By pressing the test button for between 5 and 10 seconds a battery condition test is performed.

This test will last for the chosen capacity and can only be performed when the battery is fully charged (steady green LED). The light source will be lit and the green LED will flash during this test sequence.



Resetting errors

Push the test button for >10 seconds to delete all indicated errors. Then the luminaire enters regular operation mode.

Dimming

By pressing the test button continuously for 15 seconds, when luminaire is connected to mains, the luminosity will be reduced to 10% of its total luminance. In emergency mode the light output will remain unchanged.

To restore the original settings, repeat the above procedure.

The dimming setting remains stored in the luminaire even when both mains and battery voltages are disconnected.