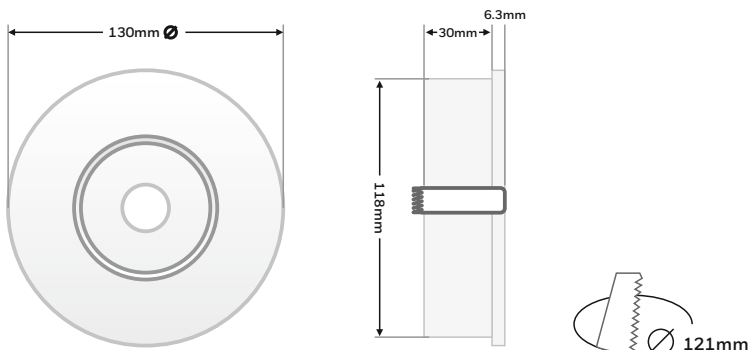
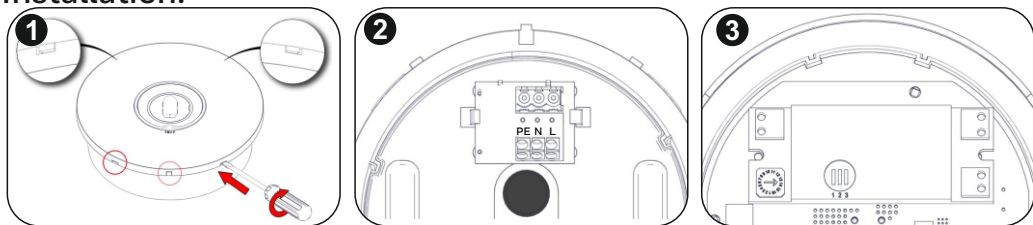


Dimensional Drawings:



Installation:




In order to install the proper lens see the appropriate installation procedure on the next page.

Step 1: Place a flat blade screwdriver on the 5 marked positions and swift it, pull up gently the bottom cover and remove it.

Step 2: Mount the bottom cover on the **false** ceiling, make sure that the light direction is correct (marked in bottom cover). Pass the mains cable through the hole and connect them to the terminal blocks. L for live wire N for neutral. The ground terminal is optional. Power supply cables cross section should be 0.8 – 2 mm².

Step 3: Set the module address. For more information about module settings see the next page.

Step 4: Refit the luminaire to the bottom cover.

 The light source contained in this luminaire shall only be replaced by the manufacturer, or his agent, or a similar qualified person.

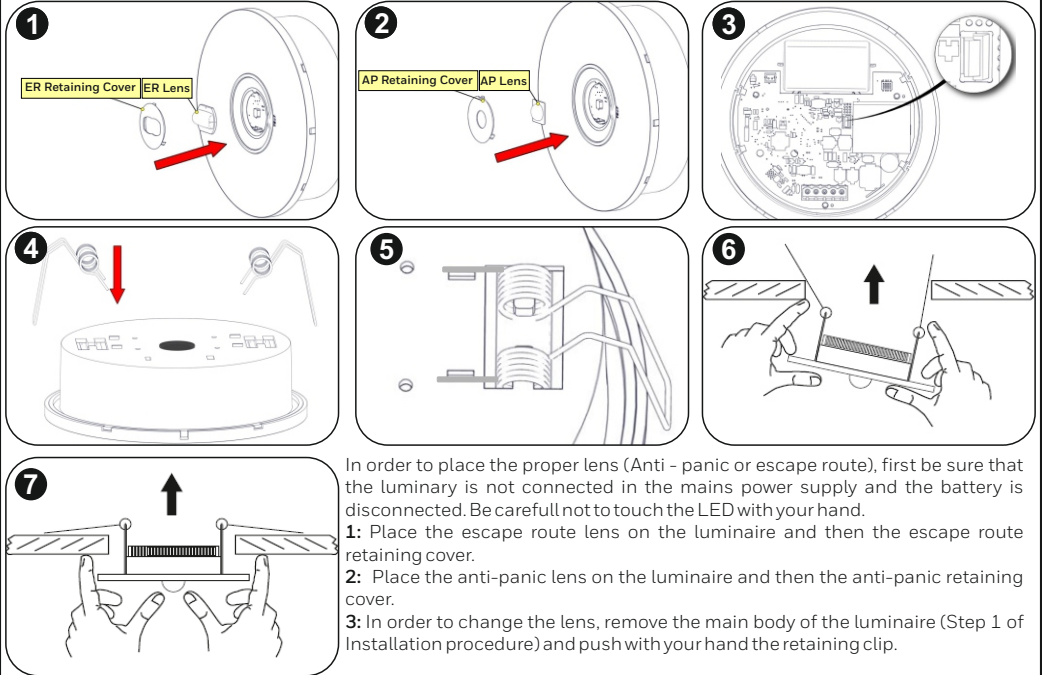
NOTE! The light source is non-user replaceable.



At the end of their useful life the packaging and product should be disposed of via a suitable recycling centre. Do not dispose of with your normal household waste. Do not burn.



Lens Installation:



In order to place the proper lens (Anti - panic or escape route), first be sure that the luminaire is not connected in the mains power supply and the battery is disconnected. Be carefull not to touch the LED with your hand.

- 1: Place the escape route lens on the luminaire and then the escape route retaining cover.
- 2: Place the anti-panic lens on the luminaire and then the anti-panic retaining cover.
- 3: In order to change the lens, remove the main body of the luminaire (Step 1 of Installation procedure) and push with your hand the retaining clip.

To install the spot on the false ceiling follow the next steps.

Step 4: Install the 2 springs contained in the package to the bottom cover of the luminaire.

Step 5: Install the 2 springs as show in picture 5.

Step 6: Bend one spring, to get into the holes of the suspended ceiling.

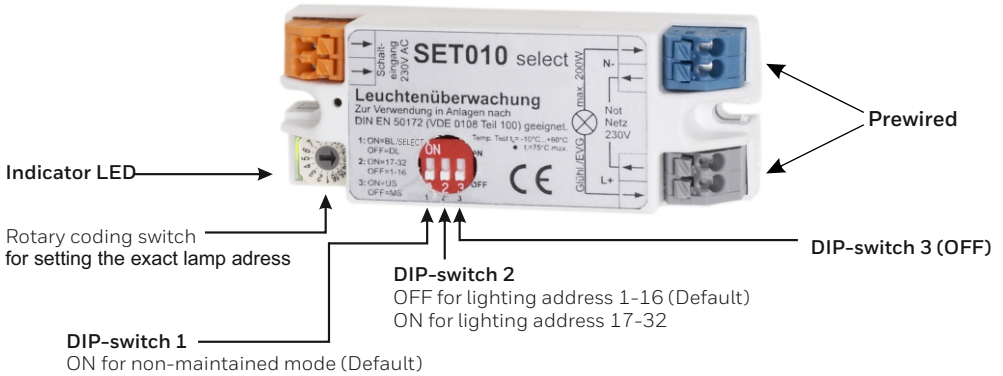
Step 7: Bend the other spring and push the luminaire upwards until it is securely mounted. The device is now ready to operate.

Technical description	Ova-OmniLED PRO Round R ER/AP SET-10 230V Centr
Part no.:	138177.S10
Operation Voltage:	220-240V AC/DC, 50-60 Hz
Maximum Power Consumption:	3.95W / 4.35VA
Lumen output:	300 lm
Produced in accordance with:	EN 60598-1, EN 60598-2-22, EN 55015 EN 61547, EN 61000-3-2, EN 61000-3-3
Ambient Temperature Range:	-10 to 60 °C
Relative Humidity:	Up to 95%
Degree of cover protection:	IP40
Technical lifetime (light source):	> 100000 hours
Weight:	230 gr

SET010 select

MODULE FOR SINGLE LAMP SELECTION AND MONITORING

Switching of one selected light in the electric circuit



Attention!
Connect L and N correctly!
Exchanging L and N causes malfunction.

Function

By means of a suitable control, it is possible with the aid of the SET010 select to determine whether the lamp connected to it is ready for use or faulty.

Settings

Setting the lighting address is carried out by a rotary coding switch that is easily accessible from the outside.

Lighting addresses 1 to 16 can be selected when DIP switch 2 is set at OFF.

The module is already prepared for administering a total of 32 lighting addresses.

The address range 17 to 32 can be selected by setting DIP switch 2 to ON.

(DIP switch 2 = ON and rotary coding switch = 1 is equivalent to lighting address 17 etc.)

Technical description	SET010 select
Dimensions (L x W x H in mm)	78 x 30 x 20
Temperature:	-10°C up to +60°C, T_{cmax} = +75°C
Cross section:	Max: 1.5mm ²