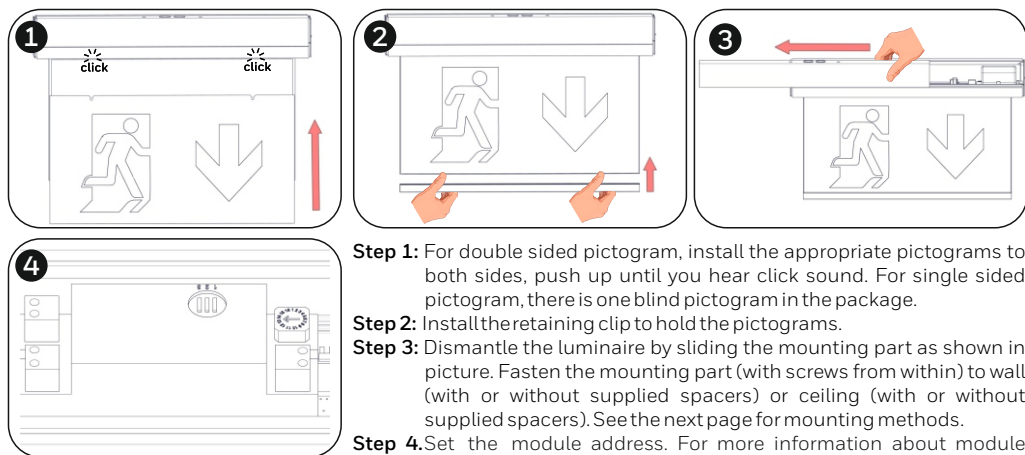


Installation:



Step 1: For double sided pictogram, install the appropriate pictograms to both sides, push up until you hear click sound. For single sided pictogram, there is one blind pictogram in the package.

Step 2: Install the retaining clip to hold the pictograms.

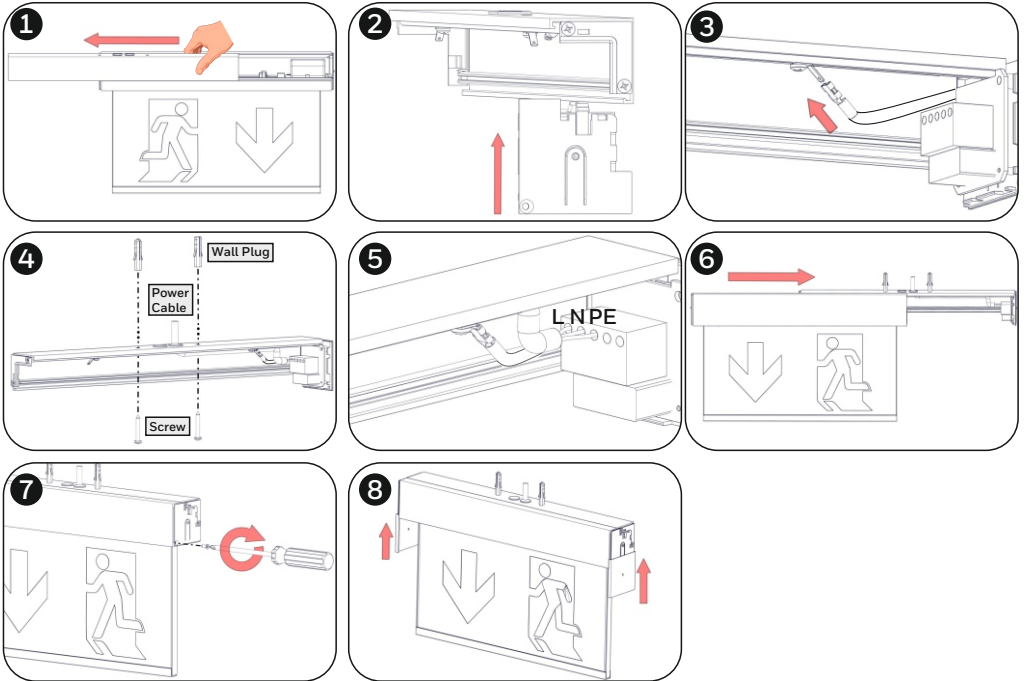
Step 3: Dismantle the luminaire by sliding the mounting part as shown in picture. Fasten the mounting part (with screws from within) to wall (with or without supplied spacers) or ceiling (with or without supplied spacers). See the next page for mounting methods.

Step 4: Set the module address. For more information about module settings see the next page.

Technical description	ExitLED PRO M 30m SET-10 230V w/pict Centr
Part no.:	138011.S10
Operation Voltage:	220-240V AC/DC, 50-60 Hz
Maximum Power Consumption:	3W / 3.45VA
Lumen output	220lm
Produced in accordance with:	EN 60598-1, EN 60598-2-22, EN 55015 EN 61547, EN 61000-3-2, EN 61000-3-3
Ambient Temperature Range:	-10 to 60 °C
Relative Humidity:	Up to 95%
Degree of cover protection:	IP40
Technical lifetime (light source):	> 100000 hours
Weight:	950 gr

Mounting Methods

Ceiling Mounting



To mount the luminaire to the ceiling, with or without supplied spacers, the mounting holes must face towards to the ceiling.

Step 1: Dismantle the luminaire by sliding the mounting part as shown in picture.

Step 2: Slide the plastic part with the terminals to the mounting part, until you hear click sound.

Step 3: Install the ground wire as shown in picture.

Step 4: Fasten the mounting part with the supplied mounting accessories. Drill a hole on a black grommet and pass the mains cables through it.

Step 5: Connect the mains cables to terminal blocks: L for live wire, N for neutral and PE for ground. Power supply cables cross section should be 0.8 - 3 mm². Tighten the cable tie around the cables.

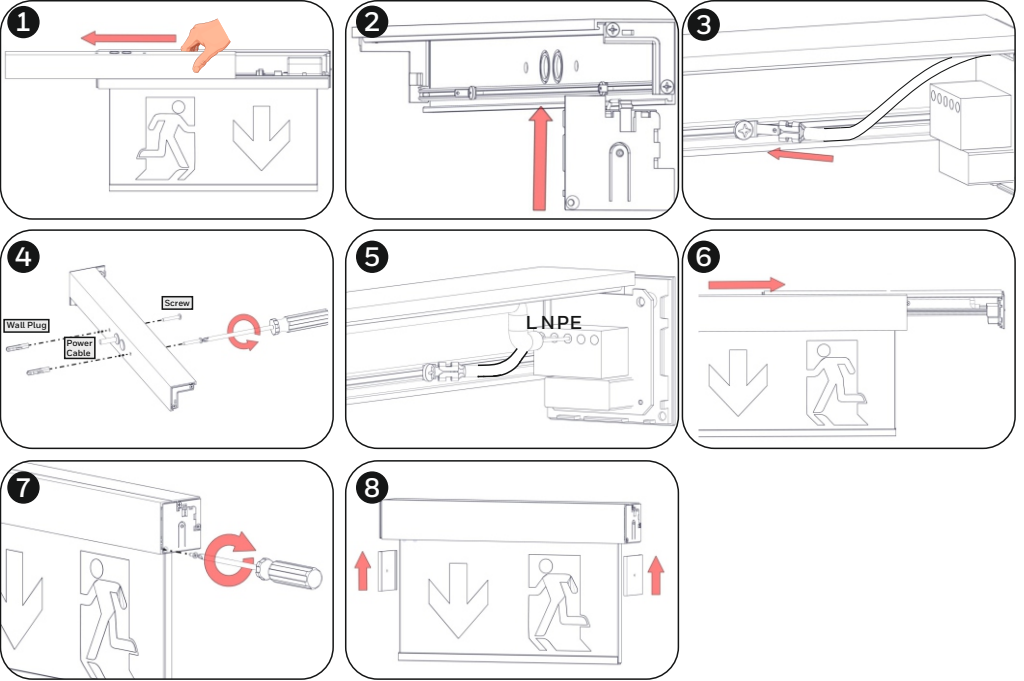
Step 6: Slide the main body of the luminaire back to the mounting part.

Step 7: Fasten the screw on the side of the luminaire.

Step 8: Slide the aluminium protective covers to both sides of the luminaire, until you hear click sound.

Mounting Methods

Wall Mounting



To mount the luminaire to the wall, with or without supplied spacers, the mounting holes must face towards to the wall.

Step 1: Dismantle the luminaire by sliding the mounting part as shown in picture.

Step 2: Slide the plastic part with the terminals to the mounting part, until you hear click sound.

Step 3: Install the ground wire as shown in picture.


Step 4: Fasten the mounting part with the supplied mounting accessories. Drill a hole on a black grommet and pass the mains cables through it.

Step 5: Connect the mains cables to terminal blocks: L for live wire, N for neutral and PE for ground. Power supply cables cross section should be $0.8 - 3 \text{ mm}^2$. Tighten the cable tie around the cables.

Step 6: Slide the main body of the luminaire back to the mounting part.

Step 7: Fasten the screw on the side of the luminaire.

Step 8: Slide the aluminium protective covers to both sides of the luminaire, until you hear click sound.

 The light source contained in this luminaire shall only be replaced by the manufacturer, or his agent, or a similar qualified person.

NOTE! The light source is non-user replaceable.



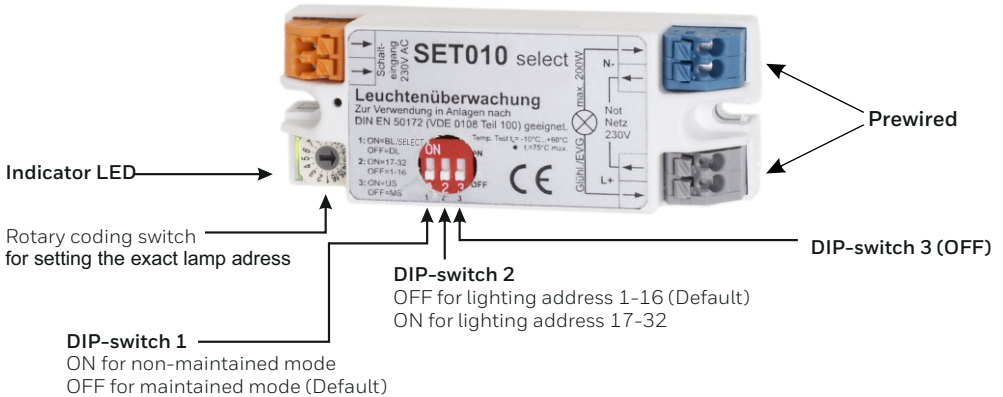
At the end of their useful life the packaging and product should be disposed of via a suitable recycling centre. Do not dispose of with your normal household waste. Do not burn.



SET010 select

MODULE FOR SINGLE LAMP SELECTION AND MONITORING

Switching of one selected light in the electric circuit



Attention!
Connect L and N correctly!
Exchanging L and N causes malfunction.

Function

By means of a suitable control, it is possible with the aid of the SET010 select to determine whether the lamp connected to it is ready for use or faulty.

In the mixed operation circuit, the connected lamp can also be additionally set in non-maintained mode or maintained mode (DIP Switch 1).

Settings

Setting the lighting address is carried out by a rotary coding switch that is easily accessible from the outside.

Lighting addresses 1 to 16 can be selected when DIP switch 2 is set to OFF.

The module is already prepared for administering a total of 32 lighting addresses.

The address range 17 to 32 can be selected by setting DIP switch 2 to ON.

(DIP switch 2 = ON and rotary coding switch = 1 is equivalent to lighting address 17 etc.)

Technical description	SET010 select
Dimensions (L x W x H in mm)	78 x 30 x 20
Temperature:	-10°C up to +60°C, T _{critmax} = +75°C
Cross section:	Max: 1.5mm ²