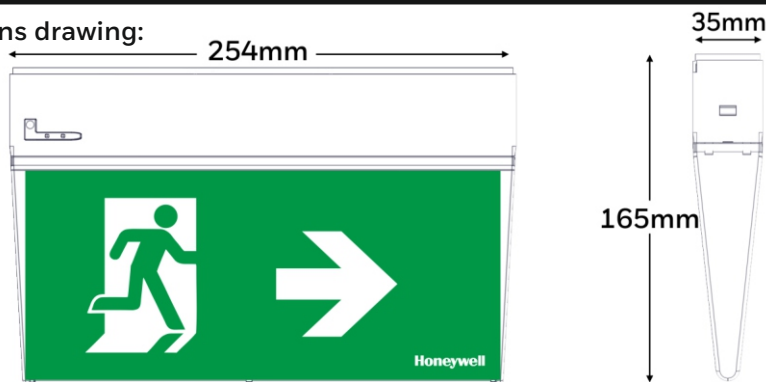
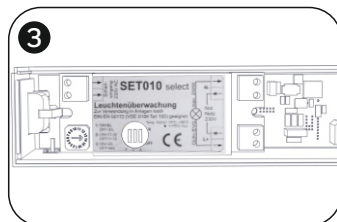
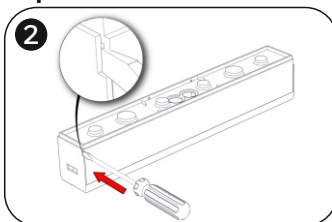
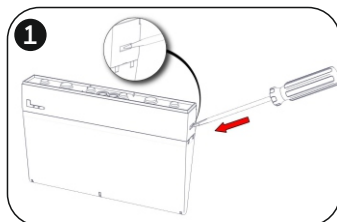


Dimensions drawing:



Common Installation Steps:



MultiLED PRO can be used as an emergency luminaire or an exit sign. See the next page for mounting methods. Below some common steps to follow.

Step 1: Place a flat blade screwdriver to the transparent legend from the main body by pressing gently on the retaining clips as shown in picture.

Step 2: Place a flat blade screwdriver to dismantle the the mounting part from the main body as shown in picture.

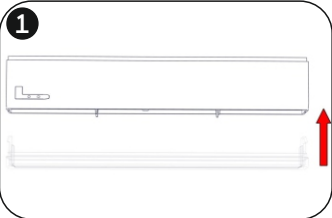
Step 3: Set the module address. For more information about module settings see the next page.

Technical description	MultiLED PRO Combi SET-10 IP40 230V w/pict Centr
Part no.:	138010.S10
Operation Voltage:	220-240V AC/DC, 50-60 Hz
Maximum Power Consumption:	3.6W / 4VA
Lumen output	350lm
Produced in accordance with:	EN 60598-1, EN 60598-2-22, EN 55015 EN 61547, EN 61000-3-2, EN 61000-3-3
Ambient Temperature Range:	-10 to 60 °C
Relative Humidity:	Up to 95%
Degress of cover protection:	IP40
Technical lifetime (light source):	> 100000 hours
Weight:	400 gr

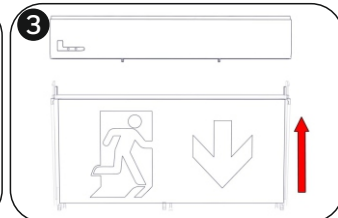
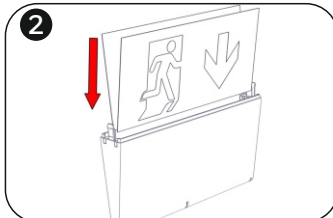
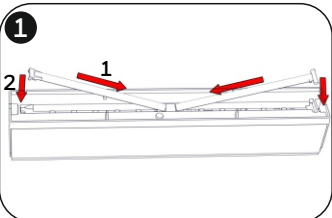


At the end of their useful life the packaging and product should be disposed of via a suitable recycling centre. Do not dispose of with your normal household waste. Do not burn.





Step 1: To use MultiLED PRO as an emergency luminaire, install the provided lens.



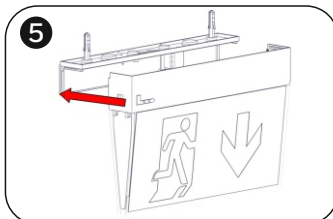
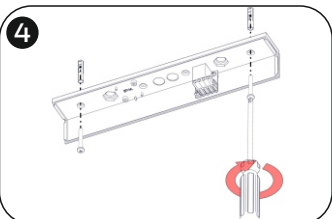
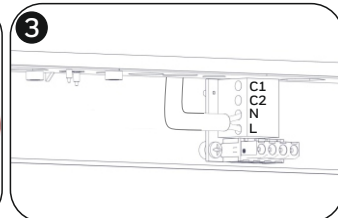
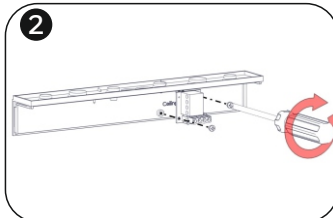
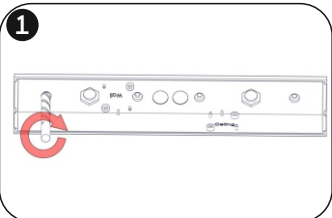
Step 1: To use MultiLED PRO as an exit sign, install the provided two lens, mind the correct orientation, as show in picture 2.

Step 2: For double sided pictogram, install the appropriate pictograms to both sides. For single sided pictogram, there is one blind pictogram in the package.

Step 3: Install the the transparent legend with the pictograms to the luminaire's base.

Mounting Methods

Ceiling Mounting



Step 1: Drill 2 holes, with a 3mm drill bit to the luminaire's mounting part.

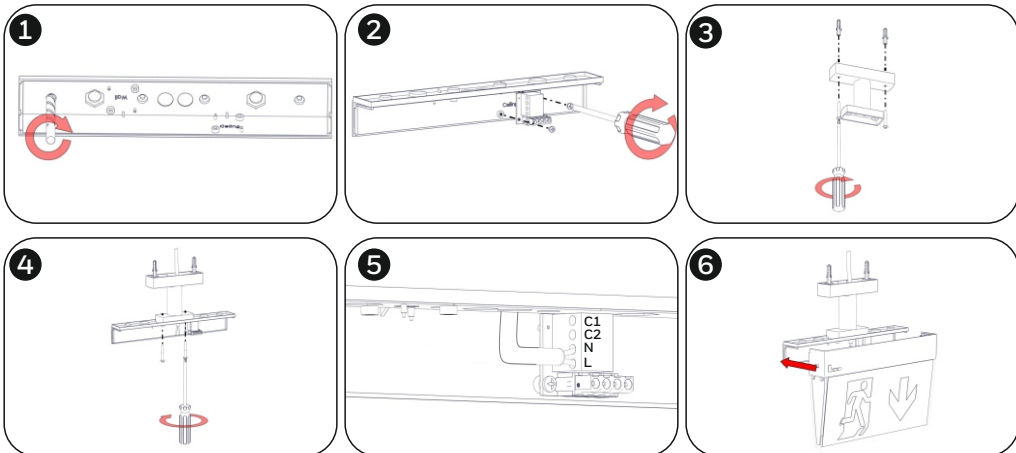
Step 2: Install the terminal board and fasten it with the two included screws (use 3*4 screws, small one).

Step 3: Drill a hole on a black grommet and pass the mains cables through it. Connect the mains cables to terminal blocks: L for live wire and N for neutral. Power supply cables cross section should be 0.8 - 3 mm². Tighten the cable tie around the cables.

Step 4: Fasten the mounting part with the supplied mounting accessories (with or without spacers).

Step 5: Slide the main body of the luminaire back to the mounting part.

Hanging Mounting



Step 1: Drill 2 holes, with a 3mm drill bit to the luminaire's mounting part.

Step 2: Install the terminal board and fasten it with the two included screws (use 3*4 screws, small one).

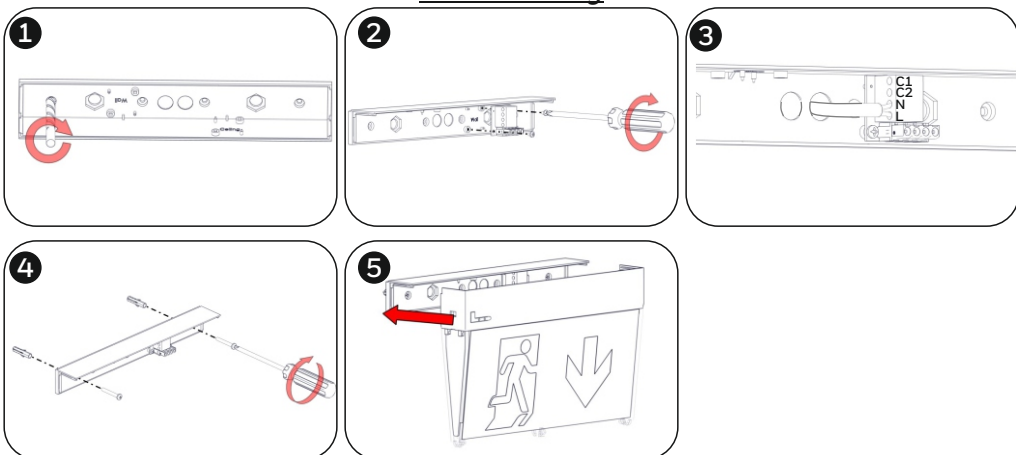
Step 3: Pass the cables through the hanging accessory and install it on the ceiling with the included mounting parts.

Step 4: Screw the luminaire mounting part with the two included mounting screws and pass through the power cable.

Step 5: Connect the mains cables to terminal blocks: L for live wire and N for neutral. Power supply cables cross section should be 0.8 - 3 mm². Tighten the cable tie around the cables.

Step 6: Slide the main body of the luminaire back to the mounting part.

Wall Mounting




Step 1: Drill 2 holes, with a 3mm drill bit to the luminaire's mounting part.

Step 2: Install the terminal board and fasten it with the two included screws (use 3*4 screws, small one).

Step 3: Drill a hole on a black grommet and pass the mains cables through it. Connect the mains cables to terminal blocks: L for live wire and N for neutral. Power supply cables cross section should be 0.8 - 3 mm². Tighten the cable tie around the cables.

Step 4: Fasten the mounting part with the supplied mounting accessories.

Step 5: Slide the main body of the luminaire back to the mounting part.

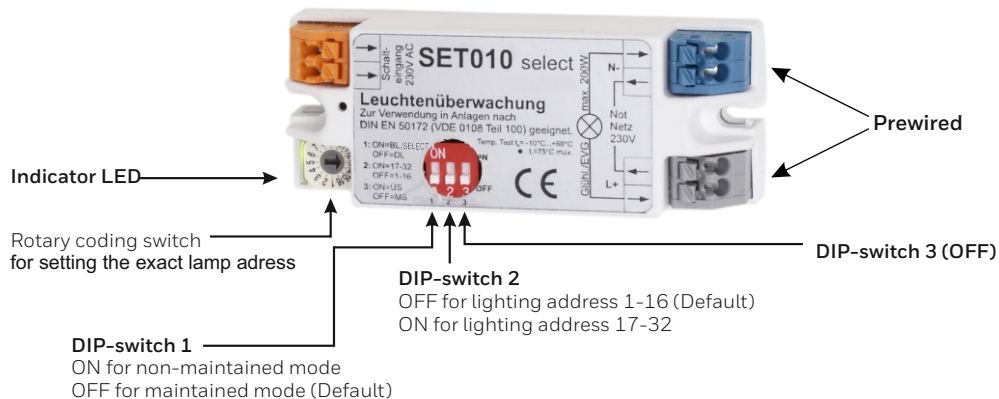
 The light source contained in this luminaire shall only be replaced by the manufacturer, or his agent, or a similar qualified person.

NOTE! The light source is non-user replaceable.

SET010 select

MODULE FOR SINGLE LAMP SELECTION AND MONITORING

Switching of one selected light in the electric circuit



Function

By means of a suitable control, it is possible with the aid of the SET010 select to determine whether the lamp connected to it is ready for use or faulty.

In the mixed operation circuit, the connected lamp can also be additionally set in non-maintained mode or maintained mode (DIP Switch 1).

Settings

Setting the lighting address is carried out by a rotary coding switch that is easily accessible from the outside.

Lighting addresses 1 to 16 can be selected when DIP switch 2 is set at OFF.

The module is already prepared for administering a total of 32 lighting addresses.

The address range 17 to 32 can be selected by setting DIP switch 2 to ON.

(DIP switch 2 = ON and rotary coding switch = 1 is equivalent to lighting address 17 etc.)

Technical description	SET010 select
Dimensions (L x W x H in mm)	78 x 30 x 20
Temperature:	-10°C up to +60°C, $T_{\text{OMAX}} = +75^\circ\text{C}$
Cross section:	Max: 1.5mm ²