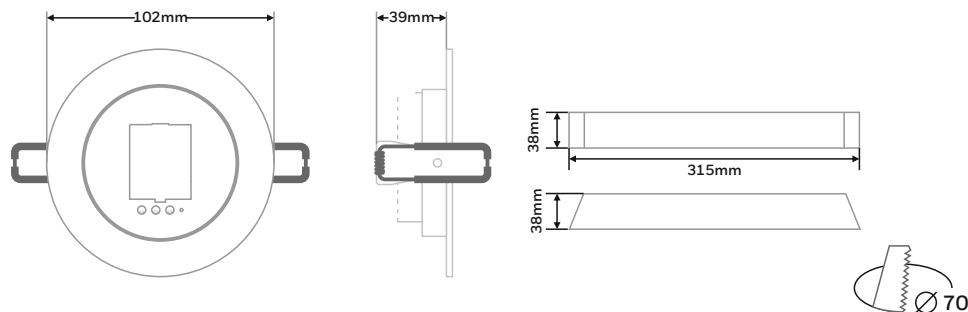
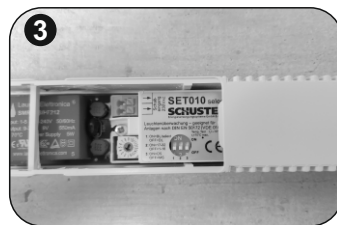
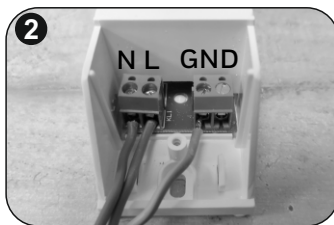
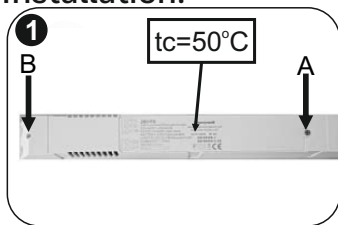


### Addressable CBS Emergency Light

#### Dimensional Drawings:



#### Installation:



To install this luminaire, a hole  $\varnothing$  70 mm must be cut in the suspended ceiling. For correct mounting, observe the light direction

- Step 1:** Unfasten the mounting screws, A for SET-10 module compartment and B for electrical connections. Remove the respective covers.
- Step 2:** Connect the mains cables to the terminal blocks. L for live wire N for neutral. The ground terminal is optional. Power supply cables cross section should be 0.8 – 3 mm<sup>2</sup>.
- Step 3:** Set the module address. For more information about module settings see the next page.
- Step 4:** Place the main unit on the false ceiling. For spot installation see the next page.



The light source contained in this luminaire shall only be replaced by the manufacturer, or his agent, or a similar qualified person.

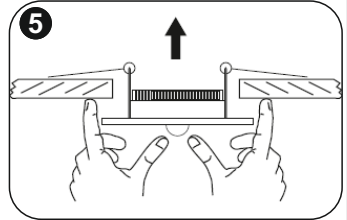
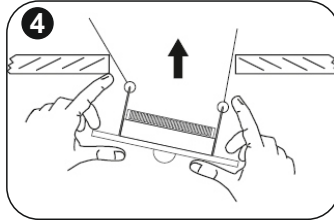
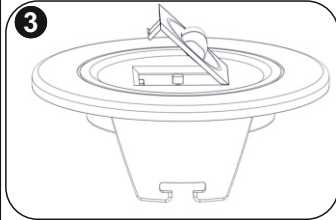
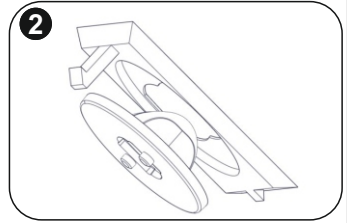
**NOTE!** The light source is non-user replaceable.



At the end of their useful life the packaging and product should be disposed of via a suitable recycling centre.  
Do not dispose of with your normal household waste.  
Do not burn.



## Spot Installation:



**Step 1:** In order to place the proper lens (Anti - panic or escape route), first be sure that the luminaire is not connected in the mains power supply and the battery is disconnected. A 5 lux lens (Part no. 2900XX.STR) is also available for order. Use the corresponding lens retaining cover depending on the lens you will use.

**Step 2:** Put the lens on the retaining cover.

**Step 3:** Insert the cover with the lens on the luminaire. Be carefull not to touch the LED with your hand.

**To install the spot place the main unit on the false ceiling and follow the next steps.**

**Step 4:** Bend one spring, to get into the holes of the suspended ceiling.

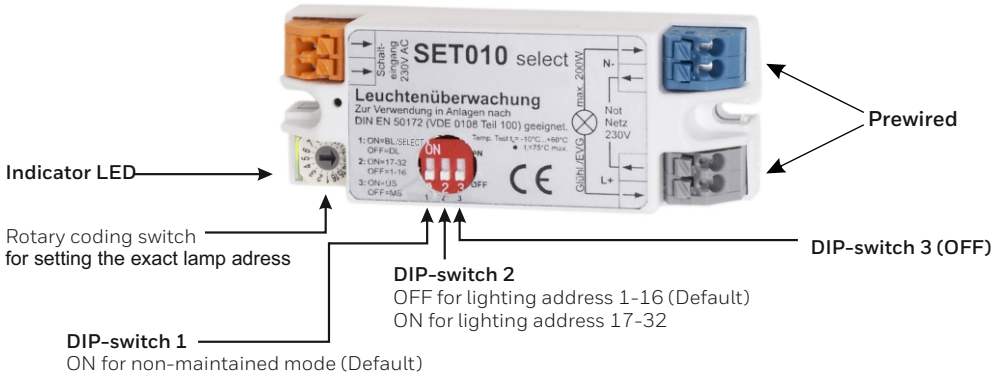
**Step 5:** Bend the other spring and push the luminaire upwards until it is securely mounted. The device is now ready to operate.

Technical description	Ova-OmniLED Recessed Spot ER/AP SET-10 230V
Part no.:	138007.S10
Operation Voltage:	100-240V AC/DC, 50-60 Hz
Maximum Power Consumption:	4.6W / 4.9VA
Lumen output:	360 lm
Produced in accordance with:	EN 60598-1, EN 60598-2-22, EN 55015 EN 61547, EN 61000-3-2, EN 61000-3-3
Ambient Temperature Range:	-10 to 60 °C
Relative Humidity:	Up to 95%
Degree of cover protection:	IP20
Technical lifetime (light source):	> 100000 hours
Weight:	315 gr

# SET010 select

## MODULE FOR SINGLE LAMP SELECTION AND MONITORING

Switching of one selected light in the electric circuit



**Attention!**  
**Connect L and N correctly!**  
**Exchanging L and N causes malfunction.**

## Function

By means of a suitable control, it is possible with the aid of the SET010 select to determine whether the lamp connected to it is ready for use or faulty.

## Settings

Setting the lighting address is carried out by a rotary coding switch that is easily accessible from the outside.

Lighting addresses 1 to 16 can be selected when DIP switch 2 is set at OFF.

The module is already prepared for administering a total of 32 lighting addresses.

The address range 17 to 32 can be selected by setting DIP switch 2 to ON.

(DIP switch 2 = ON and rotary coding switch = 1 is equivalent to lighting address 17 etc.)

Technical description	SET010 select
Dimensions (L x W x H in mm)	78 x 30 x 20
Temperature:	-10°C up to +60°C, $T_{cmax}$ = +75°C
Cross section:	Max: 1.5mm <sup>2</sup>