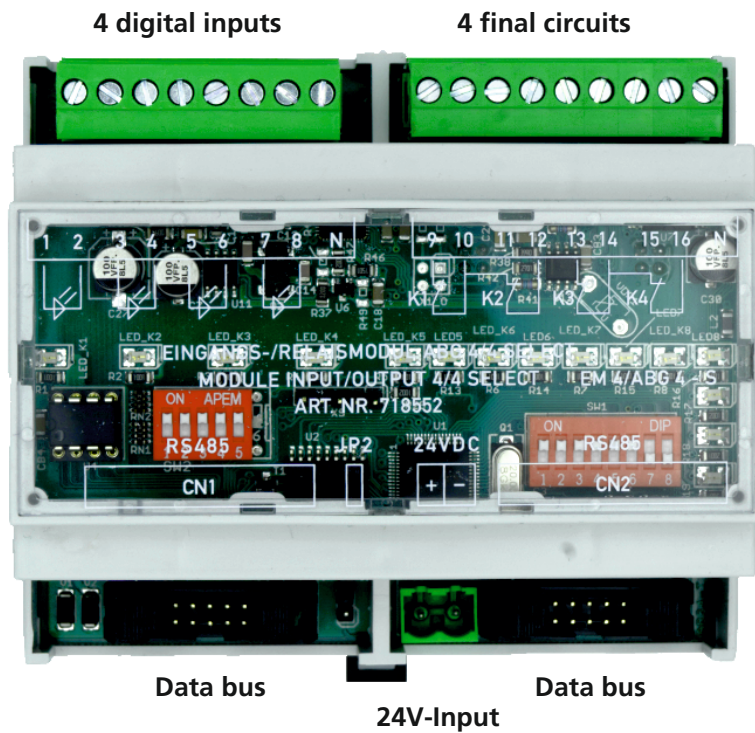


Input/relay module 4/4 Select

Module for up to 4 freely programmable end circuits with the possibility of to switch **each lamp individually** within the circuit



One LED per input indicates ist status.

Relay with status LED

3 yellow LEDs inform about the status of the data bus

Functionality Each circuit can be controlled from a higher level or from external switching inputs. Several types of fuse are possible for the protection of the circuits, which are permitted according to the regulations. Via external potential-free contacts, each of the four 24 VDC inputs can be assigned to one or more circuits of the safety lighting system.

Status displays The status of each individual relay and each individual input as well as the status of the data bus is indicated by LEDs.

One LED per input indicates ist status:

LED lights up.	The external switch is closed.
LED doesn't light up.	The external switch is open.

Two LEDs per relay indicate the status of the outgoing circuit:

LED lights up green.	The outgoing circuit is switched on.
LED blinks red.	There is no current.
The LED lights up red.	The circuit monitoring test is negative, i.e. there is a circuit or lamp fault.

Installation The input/relay module can be installed both in the central control unit and in the sub-distributors of the emergency lighting. Only one bus cable(LAN CAT 7) is required at a time.

Technical data

Maximum fuse protection per circuit:	10A
Maximum total output per module:	13,5A
Dimension (WxHxD in mm):	105 x 90 x 58